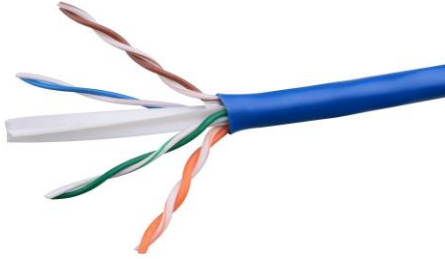


CAT6 UTP Cable (24AWG)

Model: CT-C6-UTP-305PVCB-24A



Description

- 4 pairs 100 Cat.6 cable, adopt 24AWG bare copper to be the center conduction, PE to be the dielectric and fireproof material to be the jacket.
- Conform to the standards of ISO/IEC, TIA/EIA and EN.
- All the electrical characteristics are even exceed the latest Cat.6 standards of ISO/IEC.
- The “+” type inner frame in the center ensures NEXT capacity and reasonable minimum bend radius.
- LSZH: means “Low smoke zero halogen”, which is the symbol of environmental protection.

Application

- 10/100/1000Mbps Ethernet
- 100VG-AnyLAN
- Token ring
- ATM155/ATM622 etc,

Electrical Characteristics

- Impedance: 100 ± 15
- Return resistance: 9.4/100m
- Unbalance resistance: $\leq 3\%$
- Insulation resistance: $\leq 5000 \text{ M}\Omega \cdot \text{Km}$
- Roted communicate rate: 65%

Physical Characteristics

- Copper diameter: 24AWG, Outer diameter: $5.9\pm 0.2\text{mm}$
- Length: 305mtr / 500mtr
- Jacket material: PVC / LSZH
- Roted temperature: $-20\sim 60^{\circ}\text{C}$