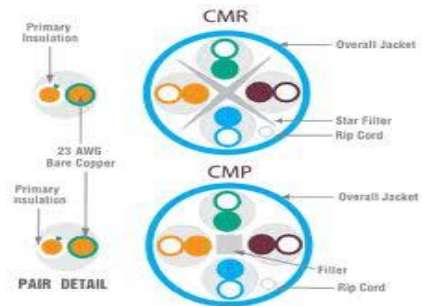
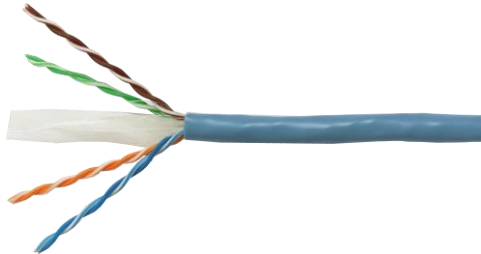


CAT6 UTP Cable

Model: CT-C6-UTP-305PVCB



Description

- 4 pairs 100 Cat.6 cable, adopt 23AWG bare copper to be the center conduction, PE to be the dielectric and fireproof material to be the jacket.
- Conform to the standards of ISO/IEC-11801, TIA/EIA-568B.2-1 and EN.
- All the electrical characteristics are even exceed the latest Cat.6 standards of ISO/IEC.
- The “+” typer inner frame in the center ensures NEXT capacity and reasonable minimum bend radius.
- LSZH: means “Low smoke zero halogen”, which is the symbol of environmental protection.

Application

- 10/100/1000Mbps Ethernet
- 100VG-AnyLAN
- Token ring
- ATM155/ATM622 etc;

Electrical Characteristics

- Impedance: 100 ± 15
- Return resisitance: 9.4/100m
- Unbalance resisitance: $\leq 5\%$
- Static electric capacity: 51pF/m 1KHz
- Unbalance capacity: 73.2pF/100m
- Roted communicate rate: 65%

Physical Characteristics

- Copper diameter: 23AWG, Outer diameter: $6.1\pm 0.2\text{mm}$
- Weight: 13.5kg/kft
- Minimum bend radius: $6-8\times OD$, Maximum pulling tension: ≤ 10
- Jacket material: PVC/LSZH
- Roted temperature: $-20\sim 60^{\circ}\text{C}$